

Reading Depot & Head Office, Unit 34, Robert Cort Industrial Estate,
Britten Road (off Elgar Road), Reading, Berkshire. RG2 0AU
tel. 0118 975 3377, fax. 0118 975 3393

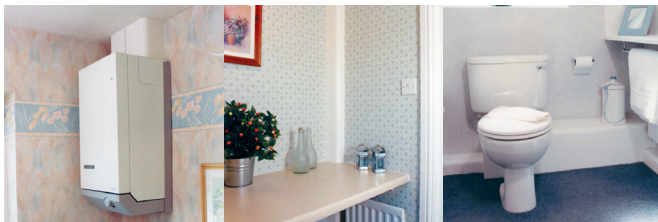
Eastleigh Depot, Unit 3 Stanstead Road Ind Estate, Goodwood Road,
Eastleigh, Hants, SO50 4RZ
tel. 023 8065 2647, fax. 023 8065 2675

www.dorseyconstructionmaterials.co.uk



BUYING - PENDOCK PREFORMED PLYWOOD PIPEWORK CASINGS

A range of preformed plywood casings for use at skirting or other corner locations for encasing pipework up to 250mm diameter. Available in a range of melamine finishes to suit all interior requirements. Fixed by using softwood battens and screws, or alternatively, with adhesives should post-installation access not be required.



BENEFITS & CHARACTERISTICS

Covers and protects larger pipework and heating services, vent and rainwater pipes.

Rounded corners.

Wide range of finishes.

Ideal for new build or refurbishment.

De-mountable for post installation access.

Suitable for vertical and horizontal applications.

Full range of accessories available.

STANDARD EXTERNAL DIMENSIONS FOR MX TYPE A

LEG A (mm)	LEG B (mm)
75	150
75	200
100	100
100	200
Available in 2.5m lengths	
150	150
150	200
200	200
Available in 2.5m and 3m lengths	

PENDOCK & DORSEY

Dorsey are a stockist for Alumasc's Pendock range of pipework casings and are pleased to offer this high quality finishing product. Together with Alumasc we will be happy to assist you with your design and specification to help you to create that professional finish. For further information, advice and pricing on your specific applications please contact Dorsey.

PENDOCK