

Application: To ensure compliance with fire and acoustic regulations

Designed to restrict the spread of smoke and flames and to minimise flanking noise transmission in concealed cavities in masonry, timber frame and steel frame constructions.



Description

Isowool Cavity Barriers are available in two standard widths (measured down the plane of the cavity) – 100mm, for normal fire stopping and noise reduction applications, and 300mm for party wall/external wall cavity junctions and where higher performance levels are required.

They are made from a continuous strip of non-combustible mineral wool, compressed within a strong, flanged, colour-coded polythene sleeve.

The barriers are suitable for both vertical and horizontal applications.

Compliance with Building Regulations

Fire - Part B (England and Wales) and Part D (Scotland)

Isowool Cavity Barriers have been tested to provide up to 100 minutes of fire resistance in concealed cavities.

Acoustic – Part E and Robust Details (England and Wales) and Part H (Scotland)

Isowool Cavity Barriers comply with the generic description for cavity closers to prevent flanking noise transmission along concealed cavities, and will thus ensure Building Regulations compliance.

Durability

Isowool Cavity Barriers will retain their physical integrity and are capable of withstanding rugged handling and extreme on-site conditions without fracturing. The products are easy to install, and once in-situ, their performance will not be affected by movement of the building due to subsidence, shrinkage or thermal change.

Environmental

Isowool Cavity Barriers are a glass mineral wool product, manufactured from silica sand, the Earth's most abundant naturally occurring mineral and a sustainable infinite resource. Glass mineral wool is one of the most environmentally friendly insulation materials. Inorganic and completely inert, over 70% of the raw material used in the Isowool production process is recycled. The recycled material can be post-consumer glass (from housing regeneration projects) or waste glass from bottle and flat glass manufacture, which would otherwise go to landfill. The process does not include the use of, CFC's, HCFC's or other environmentally damaging gases.

Benefits of Isowool Cavity Barriers

- Fire** - Up to 100 minutes fire resistance in concealed cavities
- Acoustic** – Ensures compliance with acoustic regulations flanking noise requirements
- Timber Frame** – Chiltern International Fire report for 1 hour performance at external wall cavity/party wall cavity T-junctions
- Steel Frame** – Self adhesive grade available to ensure effective installation
- Joint free** – Full storey height (2.4m) available, so no joints
- Robust** – Not easily damaged in storage, during transport or on site and during installation
- Flanged** – Flanges standard on all thicknesses
- Resilient** – will tolerate structural movement and settlement
- Easy to identify** – colour coded branded sleeves to avoid installation of wrong barrier sizes
- Compact range** – Only three sizes available for all cavity widths up to 100mm – makes storage simple easy and more cost effective

Product Performance and Characteristics

Fire Performance

Isowool Cavity Barriers are manufactured from glass mineral wool, which has a Euroclass A1 fire rating when classified in accordance with BS EN 13501-1. This is the best non-combustibility rating under the new European Euroclass fire classification system.

Isowool Cavity Barriers have been tested for fire resistance (integrity and insulation) in accordance with BS 476: Part 20: 1987 and can provide up to 100 minutes fire resistance.

Substantiation: Warrington Fire Test Report No. C52472 (30 minutes fire resistance – 100mm wide barrier).
Warrington Fire Test Report No. 144942 (100 minutes fire resistance – 300mm wide barrier).

In addition, Isowool Cavity Barriers have been assessed by Chiltern International Fire laboratories as suitable for meeting the functional performance requirements (30 minutes and 60 minutes) at party wall cavity/external wall cavity T-junctions in timber frame construction.

Substantiation Chiltern Fire Test Report Reference Chilt/A05102

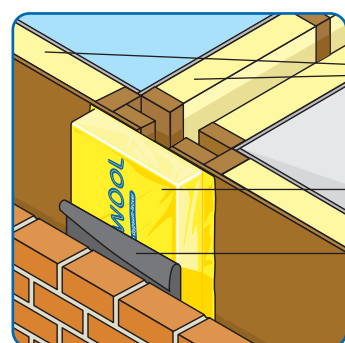
Acoustic Performance

Part E and Robust Details Building Regulations for England and Wales require the use of a cavity closer to reduce flanking noise transmission along party wall cavities and external wall cavities in masonry, timber frame and steel frame construction.

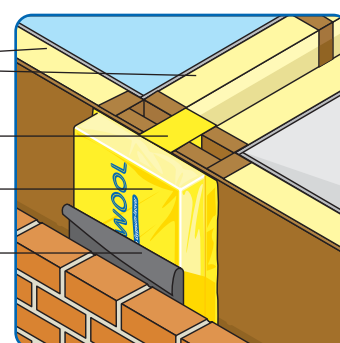
Isowool Cavity Barriers meet the generic description for cavity closers and will thus ensure compliance with Part E and Robust Details in timber frame, masonry and steel frame construction.

Performance in Application

Timber Frame Wall - 30 minutes fire resistance at party wall cavity/external wall cavity T-junction.



Timber Frame Wall - 100 minutes fire resistance at party wall cavity/external wall cavity T-junction.



Isowool Frame Batt HP 032
(for thermal, acoustic & fire performance)

100mm wide Isowool Cavity Barrier (thickness as appropriate to suit party wall cavity width)

300mm wide Isowool Cavity Barrier (thickness as appropriate to suit external wall cavity width)

Vertical DPC installed separately and included here as a suggested good design detail

Substantiation:
Chiltern International Fire Test Report Chilt/A05102

Packaging and Physical Dimensions



Cavity Barrier

Order Code	For cavity sizes mm	Sleeve Colour	Nominal Length mm	Width mm	Barriers per pack	Order Code for self adhesive grade
13826	50-65	Yellow	2400	300	8	13832
13827	66-80	Blue	2400	300	5	13833
13828	81-100	White	2400	300	5	13834

Cavity Barrier (1.2 m x 300mm)

Order Code	For cavity sizes mm	Sleeve Colour	Nominal Length mm	Width mm	Barriers per pack	Order Code for self adhesive grade
13829	50-65	Yellow	1200	300	13	13835
13830	66-80	Blue	1200	300	10	13836
13831	81-100	White	1200	300	10	13837

Cavity Barrier (1.2 m x 100mm)

Order Code	For cavity sizes mm	Sleeve Colour	Nominal Length mm	Width mm	Barriers per pack	Order Code for self adhesive grade
13222	50-65	Yellow	1200	100	50	13628
13223	66-80	Blue	1200	100	40	13590
13213	81-100	White	1200	100	40	13625

Note: Isowool self-adhesive grade Cavity Barriers may have an extended lead time. Please check with our Customer Service Department at time of enquiry or order placement.

Technical Support: 01159 451 143 or E-mail isowool.enquiries@bpb.com

British Gypsum-Isover

Sales and Marketing, East Leake, Loughborough, Leicestershire LE12 6JQ Tel: 0115 945 1050 Fax: 0115 945 1915

British Gypsum-Isover Limited reserve the right to alter or amend product specification without notice. The information given in this publication is correct to the best of our knowledge at the time of publication. Whilst British Gypsum-Isover Limited will endeavour to ensure publications are up to date, it is the users responsibility to check with us that it is correct prior to use.