

Reading Depot & Head Office, Unit 34, Robert Cort Industrial Estate,
Britten Road (off Elgar Road), Reading, Berkshire. RG2 0AU
tel. 0118 975 3377, fax. 0118 975 3393

Eastleigh Depot, Unit 3 Stanstead Road Ind Estate, Goodwood Road,
Eastleigh, Hants, SO50 4RZ

tel. 023 8065 2647, fax. 023 8065 2675

www.dorseyconstructionmaterials.co.uk

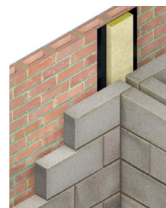


BUYING - ROCKCLOSE

ACOUSTIC PARTY WALL DPC

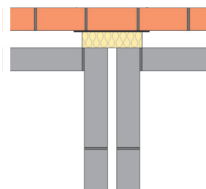
The Government's new legislation changes to Approved Document Part E "Resistance to the Passage of Sound" - is now radically influencing the way the building industry approaches noise control, with new, improved sound reduction levels becoming mandatory for both new build and existing buildings.

Dorsey are pleased to offer party wall DPC. Where a separating wall meets the external wall, Part E regulations require the use of a suitable product to reduce flanking sound transmission between dwellings. Part B regulations require that adjoining dwellings are separated at the external cavity wall by a product that provides a one hour fire resistance. The NHBC also requires that the product is protected with a suitable DPC to avoid water traversing the cavity. Acoustic party wall DPC was designed to satisfy all these requirements. It closes the cavity with mineral wool limiting sound transmission and gives one hour fire integrity in both vertical and horizontal applications.



KEY FEATURES

- Can be used in vertical and horizontal applications.
- Combined acoustic and fire stopping solution.
- Gives a one hour fire resistance.
- Meets Part E



VERTICAL APPLICATIONS

The product should be installed with the DPC facing against the outer leaf to prevent water penetration and with the Insulation projecting across the cavity spanning the wall junction. The product is self supporting and designed to be installed as the brick and block work proceeds.

HORIZONTAL APPLICATIONS

The product can be used in horizontal situations at separating floor junctions to close the cavity. The product should be supported by wall ties spaced at a maximum of 450mm centres. A continuous cavity tray should be installed above the product.

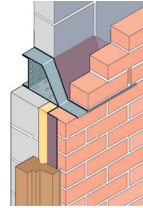


BUYING - ROCKCLOSE

ROCKCLOSE INSULATED DPC

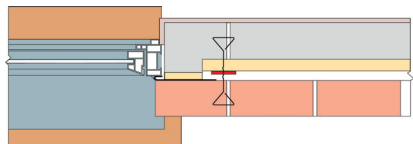
Rockwool Rockclose has been specially developed to minimise cold bridges when closing masonry cavity walls round openings. The use of Rockclose enables the cavity to be closed in the traditional way and conform to the current Building Regulations, National House-Building Council requirements and Building Research Establishment guidelines "Thermal Insulation - Avoiding Risks". Rockclose is an insulated damp proof course. It consists of a strip of glass tissue faced semi-rigid Rockwool insulation bonded to a black polyethylene dpc. The product is designed to be installed, as work proceeds, between the facing brickwork and closer blockwork prior to fitting of window and door frames. It is self-supporting for ease of installation and yet resilient enough to allow for cut irregularities in closers.

Rockwool Rockclose is suitable for a wide range of dpc applications as shown. At localised reductions in cavity widths Rockclose should be built in as brickwork proceeds and prior to fitting of the window or door frame. Supplied in 1200 mm lengths of insulation, Rockclose may be easily cut on site as required. Due to the flexible nature of Rockclose some local delamination of the Rockwool insulation may occur during site handling or installation. This does not detract from the performance of the product, either in its installation or in its long term durability. Full fitting recommendations for the bricklayer are supplied with Rockclose insulated dpc.

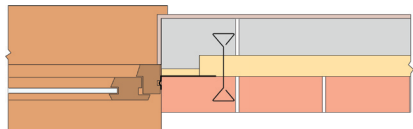


Advantages

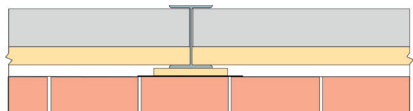
- One unit covers most applications
- Easy to handle and install
- Self supporting
- Non-combustible insulation
- Excellent sound insulation



Timber frame set back to cover vertical joint/dpc



Aluminium frame in rebated "check" reveal



Protection where stanchion protrudes cavity