

## Technical Data Sheet

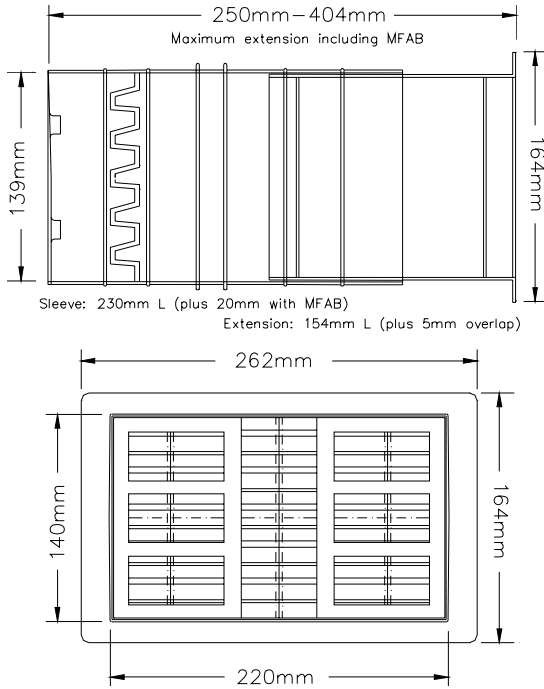
### Rytons '9 x 6' Acoustic AirLiner® Set with Flush Fitting Louvre Ventilator (Reduces Sound, Light and Draughts)

www.vents.co.uk ACOUSTIC section

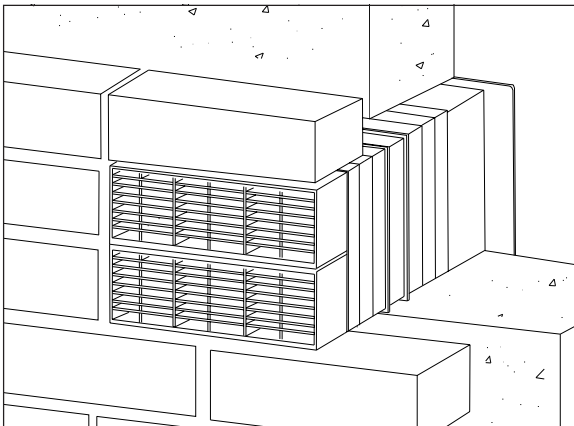
April 2005

**Rytons Acoustic AirLiner®,  
WINNER of the 2002  
British Board of Agrément Innovations Award**

#### Dimensional Drawing



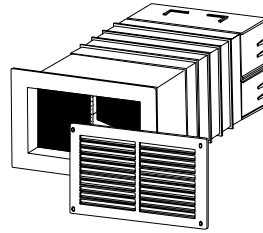
#### In-Situ Line Drawing



U.V. stabilised  
air brick and louvre.



Vent has acoustic  
properties.



#### Main Uses, Features and Benefits

- Soundproofed by a minimum of 35dB.
- Background ventilator - meets 8000mm<sup>2</sup> regulation requirements.
- Appliance ventilator - Advantica tested Effective Free Area.
- Internal baffles reduce sound, light and draughts.
- Finished with fixed open flush fitting louvre ventilator.
- Designed by Rytons, tested by the Building Research Establishment.
- Set contains Rytons Multifix® Air Brick '9x6', Rytons '9x6' Acoustic AirLiner® (TAL8000) and Rytons Flush Fitting Louvre '9x6' (LF147).

#### F30 Accessories/Sundry Items for Brick/Block/Stone Walling

171 VENTILATION DUCTS IN EXTERNAL WALLING



#### U90 General Ventilation - Domestic

310 VENTILATOR FOR HEATING APPLIANCES

340 THROUGH WALL VENTILATOR DUCT

#### Product Specification Code

Rytons TALSET.

#### Size

220mm (W) x 140mm (H).

Extends from 250mm to 404mm (L) with Rytons Multifix® Air Brick fitted.

#### Free Area for Background Ventilation

8100mm<sup>2</sup> (81cm<sup>2</sup>) (12½"²) per set.

#### Effective Free Area for Heat Producing Appliances (Advantica tested)

4200mm<sup>2</sup> (42cm<sup>2</sup>) (6½"²) per set.

Suitable for an open-flued gas appliance installed in a room or internal space with a gross rated input up to 15kW (51100 Btu/h).

#### Composition

MFAB: U.V. stabilised polypropylene.

TAL8000: Rigid Liner - Polypropylene.

TAL8000: Insert Sleeve - Polypropylene containing sound absorbent foam panels.

LF147: U.V. stabilised high impact polystyrene.

#### Colours

MFAB: Grey, black, buff/sand, terracotta, white, brown, blue/black.

TAL8000: Black.

LF147: White.

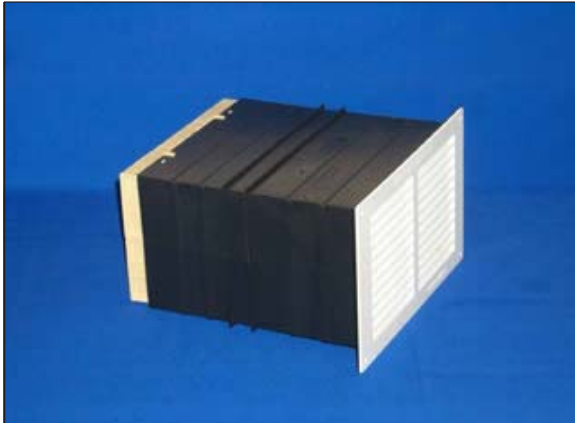
## Technical Data Sheet

### Rytons '9 x 6' Acoustic AirLiner® Set with Flush Fitting Louvre Ventilator (Reduces Sound, Light and Draughts)

www.vents.co.uk ACOUSTIC section

April 2005

#### Photo Library



#### Specification Paragraph

Manufacturer:

Rytons Building Products Ltd Tel: 01536 511874 Fax: 01536 310455  
Email: admin@rytons.com Web: www.vents.co.uk (updated regularly)

Product ref:

- Rytons '9 x 6' Acoustic AirLiner® Set Grey (ref TALSETGR)
- Rytons '9 x 6' Acoustic AirLiner® Set Black (ref TALSETBL)
- Rytons '9 x 6' Acoustic AirLiner® Set Buff/Sand (ref TALSETBS)
- Rytons '9 x 6' Acoustic AirLiner® Set Terracotta (ref TALSETTC)
- Rytons '9 x 6' Acoustic AirLiner® Set White (ref TALSETWH)
- Rytons '9 x 6' Acoustic AirLiner® Set Brown (ref TALSETDB)
- Rytons '9 x 6' Acoustic AirLiner® Set Blue/Black (ref TALSETBB)

Type: Acoustic Telescopic Liner with Multifix® Air Brick and Flush Louvre  
Free Area:

- 8100mm<sup>2</sup> (background ventilation)
- 4200mm<sup>2</sup> Effective (Advantica tested for heat producing appliances)

#### Installation

No special fixing required. Build in air brick and cavity liner as work proceeds. Extend telescopic sleeve as necessary. Fasten louvre ventilator into the flange of the AirLiner® to finish. Consideration should be given to using Rytons '9 x 6' Cowl (ABC6) in exposed areas.

#### Extra Features and Benefits

Tested by Advantica using the dynamic test procedure referred to in BS 5440-2:2000 (full test results available on request).

Individually boxed sets for easy identification, handling and efficient installation.

Air brick louvres promote unrestricted air flow and reduce risk of blockage as well as keeping large insects out. Also features built-in water baffles to prevent water penetration.

External water baffles prevent transfer of water across the cavity.

Inverted fixed open louvres for extra slim profile.

Louvre ventilator embossed with DO NOT BLOCK.

#### BBA Approval

Rytons Multifix® Air Brick and '9 x 6' Acoustic AirLiner® have BBA approval. Rytons has 59 British Board of Agrément approved products; the largest range on the market. BBA certification is third party evaluation and accreditation, and approved products are accepted by building control officers, architects, engineers and surveyors nationwide. The NHBC also accept products approved by the BBA when used as stated in the relevant BBA certificate. Rytons also has an Irish Building Regulation Statement for each of their three BBA certificates.

## Technical Data Sheet

# Rytons '9 x 6' Acoustic AirLiner® Set with Flush Fitting Louvre Ventilator (Reduces Sound, Light and Draughts)

www.vents.co.uk ACOUSTIC section

April 2005

### UK Regulations, Standards and Guidelines

#### The Building Regulations Approved Document E

Although aimed to reduce noise transmission between internal and separating walls and floors, Rytons believe noise ingress through background ventilation should also be considered and an 'acoustic' option selected if appropriate.

#### For heat producing appliances refer to:

The Building Regulations Approved Document J.

The Building Standards (Scotland) Technical Standards Part F.

British Standard BS 5440-2:2000.

#### For decorative fuel effect fires refer to:

British Standard BS 5871-3:2001.

#### For background ventilation refer to:

The Building Regulations Approved Document F.

The Building Standards (Scotland) Technical Standards Part K2 & K4.

British Standard BS 5250:2002.

## Questions

### Is a copy of the BRE test report available?

Yes, ask Rytons sales office for a copy of test report 212971.

### What is the Effective Free Area with Rytons Louvre Ventilator '9 x 6' (LV177)?

5000mm<sup>2</sup> (50cm<sup>2</sup>) (7 $\frac{3}{4}$ "<sup>2</sup>) per set.

Suitable for an open-flued gas appliance installed in a room or internal space with a gross rated input up to 17kW (58000 Btu/h).

### What is the difference between Free Area and Effective Free Area?

**Free Area** is Rytons calculation of air space achieved by measuring the minimum unobstructed gaps in a vent through which air can pass.

**Effective Free Area** is a calculated reading of how much air passes through a vent using the Advantica test procedure and should be referred to when calculating ventilation for a heat producing appliance.

### What can I use to extend the AirLiner® further?

Rytons '9 x 6' AirLiner® Extension (see data sheet [dstcl96ext](#)).

### How high should a background ventilator be fitted?

In accordance with The Building Regulations Approved Document F typically 1.7m above floor level to avoid discomfort due to cold draughts.

### Is a cowled option available for exposed areas?

Yes (see data sheet [dstalcwl](#)).

### Will installing more than one vent to achieve a greater free area have an effect on the acoustic performance?

Yes, by installing two vents anywhere in a room the combined performance of both vents would be reduced by 3dB. Installing four vents would give a reduction of 6dB.

### Test Details and Results

Components Tested	D <sub>n,e,w</sub> (dB)
Rytons Multifix Air Brick '9 x 6', Rytons Rigid Liner '9 x 6' and Un-silenced Sleeve	25
Rytons Multifix Air Brick '9 x 6', Rytons Rigid Liner '9 x 6' and Acoustic Sleeve with 3 sound proofing panels	35

The BRE judged the benefits of an 'acoustic' vent against the performance of an 'un-silenced' vent. An improvement of 10dB is considered to be a significant improvement.

#### Important Note

Testing was carried out without an internal ventilator, therefore the 35dB rating should be considered a *minimum* as once Rytons Flush Fitting Louvre Ventilator '9 x 6' (LF147) is fitted a higher figure may be achieved.

#### Regulations

Measurement of airborne sound insulation made by BRE in accordance with BS EN 20140-10 (1992) 'Laboratory measurement of airborne sound insulation of small building elements'. Single number quantities were calculated in accordance with BS EN ISO 717 Part 1 (1997) 'Rating of sound insulation in buildings and building elements'.

Measurements were undertaken in one configuration with reflective planes simulating a typical mounting position for equipment used near an edge as described in BS EN 20140-10:1992.

BRE has UKAS accreditation for the laboratory testing of sound insulation and measurements were made in accordance with UKAS approved procedures.